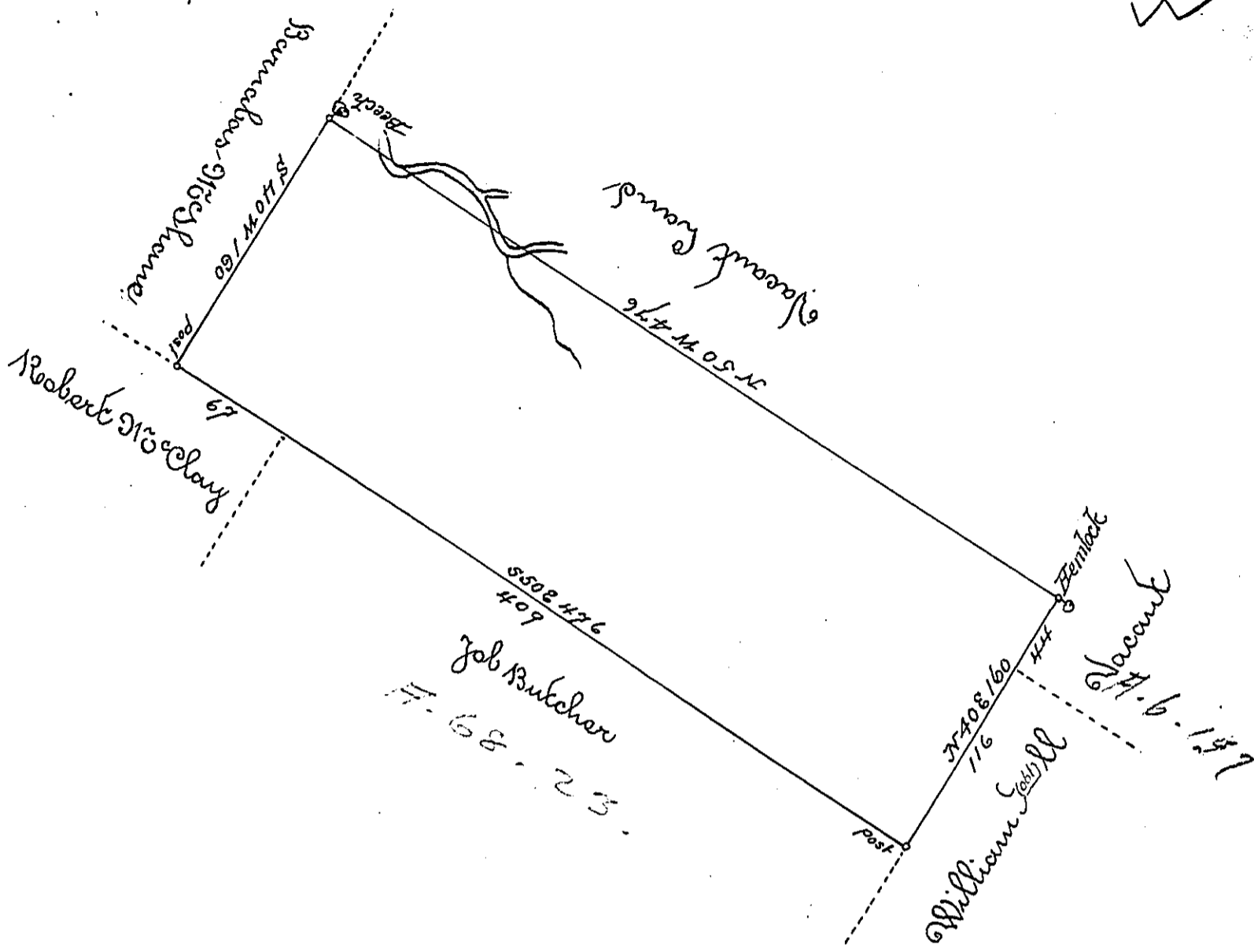


X



By Virtue of a Warrant dated the 9th October 1768 Surveyed the 8th October 1789 to Joseph Brown the above described tract of land situate on White Creek a branch of Celi in the County of Northampton containing four hundred and forty nine acres nine perches and the allowance of six Cent be

Daniel Bradhead Esquire }  
 Surveyor General }

G. Geo Palmer

IN TESTIMONY that the above is a copy of the original remaining on file in the Department of Internal Affairs of Pennsylvania, made conformably to an Act of Assembly approved the 16th day of February, 1833. I have hereunto set my Hand and caused the Seal of said Department to be affixed at Harrisburg, this

third day of March 1896-

James W. Latta  
 Secretary of Internal Affairs.